

For almost free /

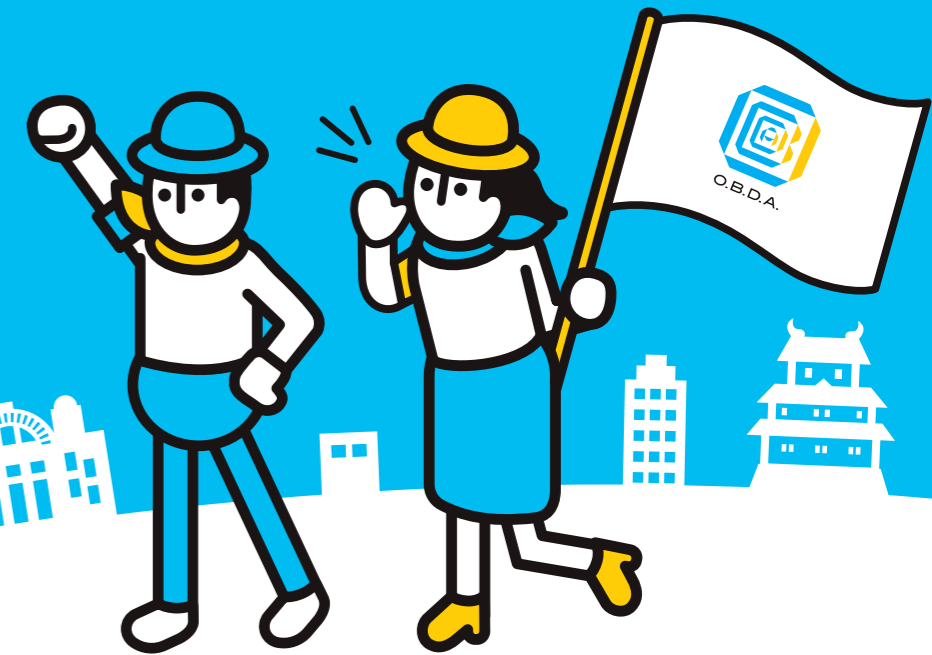
Remarkable Support

Don't miss out on
our extraordinary
services.



English site

Guide for small and
medium-sized enterprises



OSAKA BUSINESS
DEVELOPMENT AGENCY

Are entrepreneurs all alone?
Not really.

Management consultation

- Management and business succession advice
- Consultation on problems in business transactions

▶ For details, see page P3

We are good makers,
and we also want to be good
at making new clients!

Strengthening sales capabilities

- Sales channel development, sales expansion & promotion
- Sales channel development
- Use of exhibitions
- Exhibition

▶ For details, see page P4

Product making
and promotion?
Ask the professionals!

Product development and bolstering public relations

- Product development and marketing
- Making the most of creative ideas and designs

▶ For details, see page P5

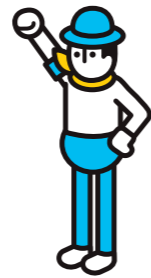
Honing technology is
a key strategy.

Strengthening technological / development capabilities

- Use of IP/technical advice
- Use of advanced technology

▶ For details, see page P6

Small businesses have big challenges. Osaka Business Development Agency (OBDA) works for you.



Although not every service is provided for free, many are amazed by the level of helpful support for such a small cost. Moreover, some are making full use of multiple services to create business opportunities and expand their companies smoothly. For those in small and medium-sized enterprises (SMEs) who have big challenges or great dreams, please make the most of the Osaka Business Development Agency (OBDA). We at OBDA are committed to sincerely engaging with each individual and provide our remarkable support.

Every business begins
with an encounter.

Business matching

- Finding new business partners

▶ For details, see page P7

Finding the right people can
solve almost all your problems.

Empowerment of human resources (recruitment)

- Resolving recruitment problems
- Hiring work-ready personnel
- Hiring non-Japanese

▶ For details, see page P8

Launching a new business
with passion & energy.

Starting businesses

- Startup support
- Women entrepreneurs support
- Founder support
- Creator startup support

▶ For details, see page P9

Knowledge is
an indispensable passport
for overseas
business expansion!

Overseas expansion

- International business support

▶ For details, see page P10

We want to go digital.
But, where should
we start?

DX promotion support / business improvement

- DX promotion support for SMEs

▶ For details, see page P11

Reliable plant and
equipment powers
corporations.

Expansion of facilities

- Capital investment support

▶ For details, see page P11

Are entrepreneurs all alone?
Not really.



Management consultation

Management and business succession advice

Business consulting office

Consultants and experts working full-time give advice to business owners and entrepreneurs about how to create business plans and raise funds.

Target SMEs and those planning to start a business
(Some services are limited to businesses based in Osaka City)

Contact Business consulting office at Business Innovation Center Osaka
TEL: 06-6264-9838
Mail: info-akinai@sansokan.jp



Yorozu Support Center

Welcome to the Business Consultation Desk, where professional management consultants are available for free to address a wide range of business issues, including marketing, e-commerce, human resources, technical challenges, financial matters, and more. You can participate in face-to-face meetings at Business Innovation Center Osaka, as well as at local chambers of commerce or financial institutions. Online consultations are also available. Feel free to contact us if you need any further information.

Target SMEs and small business owners

Contact Osaka Prefecture Yorozu Support Center
TEL: 06-4708-7045
Mail: yorozu@obda.or.jp



Consultation on problems in business transactions

Subcontractor Emergency Services

Specialized advisers conscientiously deal with a wide range of concerns related to subcontracts troubles. Besides, holding lectures and introducing lawyers.

Target SMEs and small business owners in Osaka Prefecture

Contact Subcontractor Emergency Services
TEL: 0120-418-618



We are good makers,
and we also want to be good
at making new clients!



Strengthening sales capabilities

Sales channel development, sales expansion & promotion

Support to cultivate the consumer goods market (Made in Osaka brand)

Creative products made by small- and medium-sized enterprises in Osaka Prefecture using superior techniques are eligible for certification as a "Made in Osaka Brand." Certified products are shared throughout Japan and overseas through promotional activities conducted by various support organizations, including OBDA ourselves.

Target Small and medium-sized manufacturers in Osaka Prefecture

Contact Technology Support Team, MOBIO Division
TEL: 06-6748-1054
Mail: mobio_osakasei@obda.or.jp



Sales channel development

Buyer matching for market expansion

Appointment-only business meetings where SMEs can promote their original products to buyers who have a high potential for matching with SMEs, such as department stores and supermarkets, as well as mail-order businesses.

Target SMEs seeking to expand their markets

Contact Management Support Team, Business Support Division
TEL: 06-6264-9905
Mail: match@sansokan.jp



Use of exhibitions

Exhibitions and business meetings at Business Innovation Center Osaka

At the Business Innovation Center Osaka, exhibitions and business meetings designed for particular technological themes or markets are held, allowing SMEs to seek business collaborators and partners to find a new market.

Target SMEs seeking clients and business partners

Contact Industrial Support Team, Business Support Division
TEL: 06-6264-9920
Mail: monozukuri@sansokan.jp



Exhibition

MOBIO Permanent Exhibition Hall

The LARGEST SCALE Permanent Exhibition Hall in Japan is filled with the latest technology at 200 booths. An ideal place of business matchmaking for local and international business.

Target Small and medium-sized manufacturers in Osaka Prefecture

Contact MOBIO (Monozukuri Business Information-center Osaka)
TEL: 06-6748-1011
Mail: info@m-osaka.com



Product making and promotion? Ask the professionals!



Product development and bolstering public relations

Product development and marketing

Product planning support

This project, in cooperation with the Osaka Prefectural Government, helps small and medium-sized makers and producers in Osaka Prefecture to develop their original products and find new markets by making use of their own processing technology and resources.

Target SMEs in Osaka Prefecture

Contact Management Support Team, Business Support Division
TEL:06-6264-9919
Mail: product@obda.or.jp



Market research support services

This marketing service involves test users, primarily women in their 30s to 50s, who provide candid opinions on products and services through events and small group interviews.

Target SMEs (Small group interviews are available only for SMEs in Osaka City)

Contact Management Support Team, Business Support Division
TEL:06-6264-9906
Mail: moni@sansokan.jp



Making the most of creative ideas and designs

Support for the creative industry and communities (run by MEBIC)

To revitalize companies in the creative field in Osaka, this service helps connect Osaka-based creators and encourages them to build communities where they can work with companies. MEBIC creates opportunities for future collaboration to produce new businesses and value.

Target Creators and SMEs in Osaka Prefecture

Contact Creative Network Center Osaka MEBIC
TEL: 06-4708-6114



English site

Design consultation oidc (Osaka Innovative Design Connect)

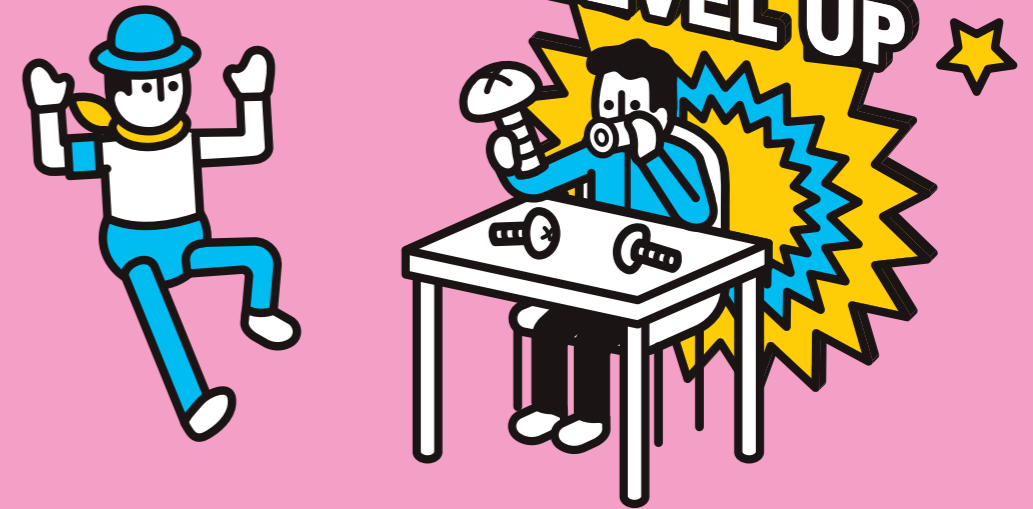
Three experienced professionals who are deeply versed in creative fields such as branding, product, graphic, and web, give consultations on design. We provide clear, customer-focused advice.

Target SMEs and those planning to start a business in Osaka Prefecture

Contact oidc (Osaka Innovative Design Connect)
TEL: 06-4256-3522
Mail: info-oidc@obda.or.jp



Honing technology is a key strategy.



Strengthening technological / development capabilities

Use of IP/technical advice

Support for using intellectual property

Working with the INPIT Comprehensive Intellectual Property Support Office, MOBIO provides comprehensive consultation and advice from patent, design, and trademark research through to rights acquisition. Starting with intellectual property consultations, MOBIO also offers a broad range of support, including technical and design consultations.

Target SMEs in Osaka Prefecture

Contact Technology Support Team, MOBIO Division
TEL:06-6748-1052
Mail: mobio_chizai@obda.or.jp



Promoting cooperation between industry and academia

By holding consultations and events related to industry-academia collaboration, we support business matching for 39 universities and technical colleges taking part in the MOBIO Industry University Alliance Office with companies that strive to launch new businesses through the resolution of technical issues.

Target SMEs in Osaka Prefecture

Contact Technology Support Team, MOBIO Division
TEL:06-6748-1054
Mail: mobio_gijyutsu@obda.or.jp



Use of advanced technology

Business support using advanced technology

TEQS is the facility that cultivates human resources who solve issues with technology. We can provide an environment and network to help you go ahead with your business, from our incubator office spaces, to business model creation, to proof-of-concept support.

Target SMEs using advanced technology

Contact Software industry plaza TEQS
TEL:06-6615-1000



English site

Every business begins with an encounter.



Business matching

Finding new business partners

Setting up deals between SMEs

To help SMEs to secure more orders and expand their trading areas, we provide them with information on a wide range of companies and their dealings, encourage them to cultivate a wider market even outside Osaka Prefecture, and arrange dealings.

Target Small and medium-sized manufacturers in Osaka Prefecture

Contact Business Support Team, MOBIO Division
TEL:06-6748-1144
Mail: torihiki@obda.or.jp



Monodzukuri B2B Network

Working in cooperation with financial institutions across Japan, experienced full-time coordinators help companies to find appropriate suppliers capable of making prototypes or parts that are difficult to process mainly from makers based in Osaka or the Kansai region.

Target Small and medium-sized manufacturers

Contact Monodzukuri B2B Network Office
TEL:06-6744-4744
Mail: monob2b@obda.or.jp



Business matching support

Experienced coordinators, who are former members of major companies, create business opportunities for makers and those utilizing advanced technologies mainly in Osaka Prefecture by providing consultation on how to resolve organizational or technological issues in SMEs.

Target Small and medium-sized manufacturers in Osaka Prefecture

Contact Business Matching Support Team
TEL:06-6745-1185



Business matching service for the manufacturing industry

Matching navigators with professional expertise, who once worked for corporations, visit each maker to grasp its technological capability, management issues, and aspirations. In light of makers' technological position, navigators introduce appropriate companies to them, making use of navigators' business networks.

Target Small and medium-sized manufacturers in Osaka City

Contact Industrial Support Team, Business Support Division
TEL:06-6264-9881
Mail: bptoiawase@sansokan.jp



Finding the right people can solve almost all your problems.



Empowerment of human resources (recruitment)

Resolving recruitment problems

Recruitment concierge service for SMEs

This is Osaka's first one-stop recruitment service provided by public organizations and private enterprises working together in the field of recruitment. Experts provide a wide range of support, from advice to practical solutions, aiming to resolve recruitment-related challenges faced by SMEs in Osaka Prefecture.

Target SMEs in Osaka Prefecture

Contact Recruitment concierge service for SMEs
TEL:06-6271-1199
Mail: hr_staff@obda.or.jp



Hiring work-ready personnel

Competent Human Resource Strategy Desk (Osaka Professional Talent)

This service helps SMEs in Osaka Prefecture define the necessary talent for their growth and achieve business innovation through the utilization of professional talent. Recruitment advisors also propose how to utilize diverse talent, including 'side business professionals' to resolve their business challenges.

Target SMEs in Osaka Prefecture

Contact Competent human resource strategy desk, Small and Medium-sized Businesses Human Resource Support Center (Osaka Professional Talent)
TEL:06-6910-8311
Mail: hr_staff@obda.or.jp



Hiring non-Japanese

Osaka Foreigner Recruitment Support Center

Dealing with a wide range of challenges when considering foreign candidates in SMEs in Osaka Prefecture, we provide a one-stop recruitment matching service to hire foreigners by working with supportive institutions based on their residence status.

Target SMEs in Osaka Prefecture

Contact Osaka Foreigner Recruitment Support Center
TEL:06-6267-1290
Mail: hr_staff@obda.or.jp



Launching a new business with passion & energy.



Starting businesses

Startup support

Startup creation and growth support

Based in Japan's Kansai region, the Osaka Innovation Hub serves as a space for innovators to share ideas and build connections. The Hub offers numerous services and programs to support individuals pursuing groundbreaking projects both within Japan and abroad to create startups and pursue new projects.

Target Individuals or groups planning to create new businesses or startups; universities and research institutions

Contact Osaka Innovation Hub
TEL:06-6359-3004



English site

Founder support

Holding lectures and seminars for entrepreneurs

Seminars and lecture series are held to help entrepreneurs to learn the basic knowledge for launching businesses and how to tackle challenges. We also encourage lecture participants to interact with each other and create business networks, discover promising entrepreneurs through business plan contests, and provide them with hands-on support.

Target Those planning to start a business in Osaka City

Contact Entrepreneur Support Team, Business Support Division
TEL:06-6264-9885
Mail:sougyo@sansokan.jp



Women entrepreneurs support

Networking project to support women entrepreneurs (LED)

A project called DISCOVER MYSELF, supports women entrepreneurs based in Kansai-region (Osaka, Kyoto, Hyogo, Nara, Shiga, Wakayama, Fukui). Along with this project, several programs—including acceleration program DOORS and matching event LED KANSAI—support women who have devoted themselves to their businesses with the aim of creating a better society for their loved ones. We also help women entrepreneurs to scale up their businesses by building networks of diverse supporters and business partners.

Target Women entrepreneurs in Kansai region

Contact Woman Entrepreneurs Support & Network Office
TEL:06-6271-0279
Mail:info@discovermyself.jp



Creator startup support

Osaka Design Promotion Plaza project

We provide an incubation office where creators who have just started a business can receive support such as interviews, and we have also set up a co-working space. We hold consultation sessions, sales seminars, knowledge seminars, etc. for creators who are thinking about becoming independent or starting a business.

Target The creators who newly established or just started their business

Contact Osaka Design Promotion Plaza
TEL:06-6615-5510
Mail:info@osaka-design.co.jp



English site

Knowledge is an indispensable passport for overseas business expansion!



Overseas expansion

International business support

International Business Support Center (BSC)

Experienced coordinators provide those who engage in international businesses with advice for free on how to promote their original products overseas, import products from abroad, expand into overseas markets, and find business partners outside Japan. Consultations are also available online.

Target SMEs in Osaka Prefecture

Contact International Division
TEL:06-6947-4088
Mail:bsc@obda.or.jp



Business Support Desk

Business Support Desks are set up in five Asian countries: India, Indonesia, Thailand, Vietnam, and Myanmar. Each hub provides SMEs with reliable support for international business, including conducting market surveys, making a list of candidate companies as potential business partners, giving on-site support for business trips and holding online business meetings.

Target SMEs in Osaka Prefecture

Contact International Division
TEL:06-6947-4088
Mail:ibo@obda.or.jp



Shanghai Business Support

We work with the Shanghai branch office to support SMEs with the Shanghai branch office to support SMEs which embark on a business venture in China by introducing local companies, conducting market surveys, and providing information. We provide them with strong support for cultivating overseas markets, especially in East China, such as Shanghai Municipality, Jiangsu and Zhejiang Provinces.

Target SMEs in Osaka Prefecture

Contact International Division
TEL:06-6947-4088
Mail:ibo@obda.or.jp



Participation in overseas trade fairs Holding online seminars

We help SMEs to maximize their business opportunities in international business, cultivate new markets, find suppliers and trade partners through participation in overseas trade fairs. By holding web seminars, we provide them with the latest information on trends in the international economy, local updates, and candid opinions from Japanese companies that have already embarked on international business.

Target SMEs in Osaka Prefecture

Contact International Division
TEL:06-6947-4088
Mail:ibo@obda.or.jp



We want to go digital.
But, where should we start?



DX promotion support / business improvement

DX promotion support for SMEs

DX support project for SMEs (OBDX)

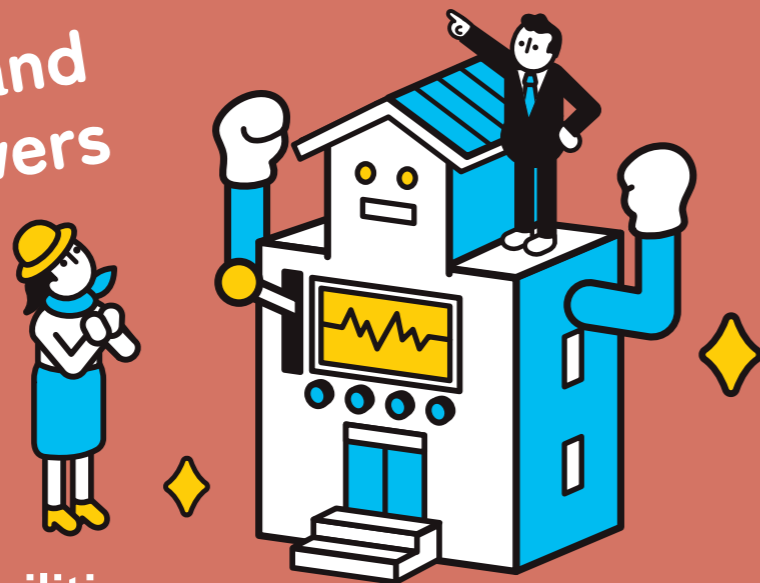
We provide SMEs with professional support, such as holding informative seminars and lectures and assigning DX advisers to drive digital transformation in SMEs.

Target SMEs in Osaka Prefecture

Contact Osaka DX Promotion Project
TEL: 06-6264-9936
Mail: dx-soudan@obda.or.jp



Reliable plant and equipment powers corporations.



Expansion of facilities

Capital investment support

Equipment Leasing System for Small-sized Businesses

Equipment Leasing System for Small-sized Business is a public system; we(OBDA) purchase machinery and equipment that is necessary for small business owners to launch a new venture, or reform the management on behalf of owners, and sell machinery on an installment plan at a long-term, low interest rate or lease it.

Target Entrepreneurs and small business owners who have offices in Osaka Prefecture

Contact Equipment Support Division
TEL: 06-6947-4345
Mail: setsubi@obda.or.jp



CHECK!



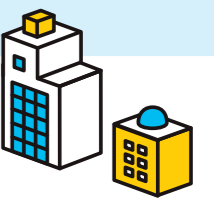
OBDA provides a wide range of support other than those mentioned above. For more information, please visit OBDA's website.



OBDA sends a range of email newsletters to provide readers with the useful information on each support service and event and more. Sign up and get the latest information!



OBDA overview



Philosophy

Our corporate philosophy

As a professional team, OBDA contributes to sustainable growth of motivated SMEs and entrepreneurs to ensure further economic growth of Osaka in the globalized society.

Our Mission

To serve for industrial promotion in Osaka Prefecture to contribute to the sound growth and development of SMEs as well as other local industries, thereby forming a robust economic region.

Guiding principles

We continue to take action, always being aware of who we work for and the purpose we strive to achieve.

We continue to be challengers who create opportunities by ourselves.

We continue to improve ourselves with aspiration and curiosity.

We continue to work hand in hand with all the people and organizations involved, with a humble attitude.

We continue to provide inspiration that goes beyond gratitude.

Organization overview

Name of organization	Osaka Business Development Agency (OBDA) (Public interest incorporated foundation)
Main offices	General Offices, General Affairs Department MYDOME OSAKA : F7 MYDOME OSAKA, 2-5 Hommachibashi, Chuo-ku, Osaka Business Innovation Center Osaka : F13 Business Innovation Center Osaka, 1-4-5 Hommachi, Chuo-ku, Osaka
Date of establishment	April 1, 2019
Scope of Operation	① Supporting SMEs ② Management / operation of facilities ③ Other operations necessary for accomplishing our mission
Basic assets	2.54 billion yen

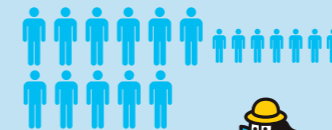


OBDA's network

As of March 2024

Members of the press

1172



Small and medium-sized manufacturers

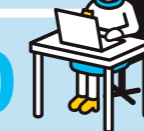
8784 businesses

Network to produce and promote the industry to extend healthy life expectancy

340 companies

Experts in management and business creation

180



MEBIC Creative support members

220

Partners & Players

Trading companies and buyers

259 members

From the Osaka-based financial institution network

174

Supporters



From the startup support organization IAG

40



OIH player members

1365

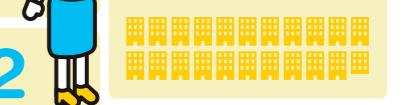


Creative Cluster

2178 companies

OIH partner members

502



LED Kansai partners (local governments and public support institutions)

49 bodies

LED Kansai supporters (companies and organizations)

62 bodies

Testers from among general consumers

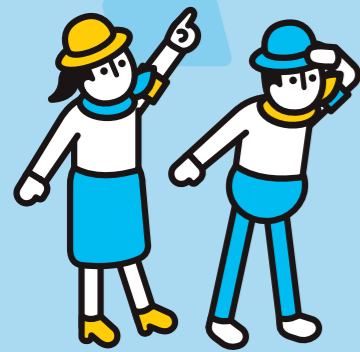
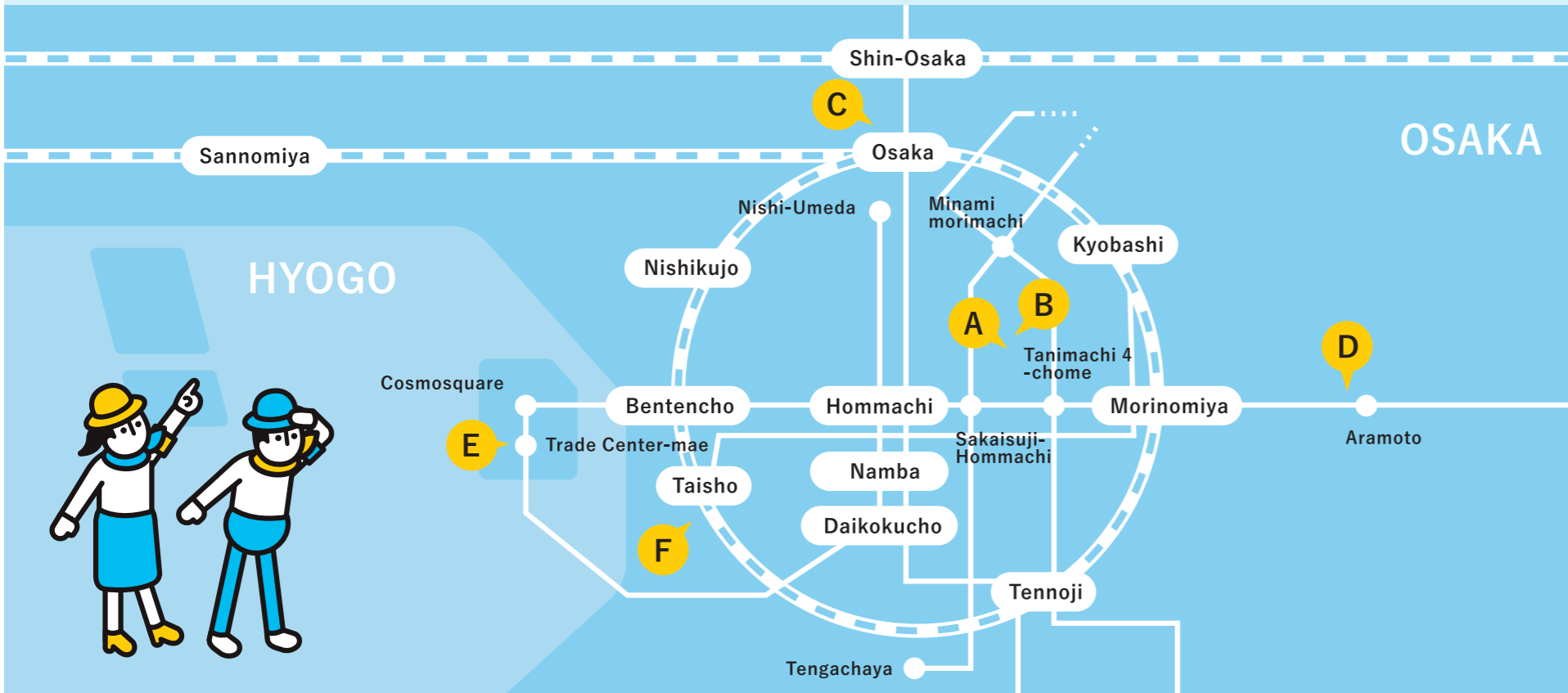
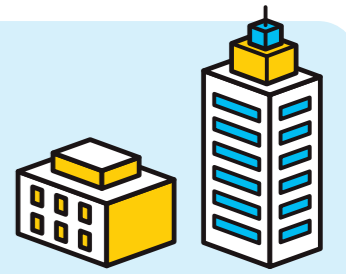
4261





Providing remarkable support (for almost free), we aim to be a tremendous source of support for small and medium-sized enterprises.

The Osaka Business Development Agency (OBDA) runs multiple institutions and provides a wide range of support in the region to boost Osaka-based small and medium-sized enterprises (SMEs). We at OBDA are committed to contributing to the growth of those companies and entrepreneurs, aiming to enhance the entire Osakan economy.



A



産創館
http://www.sansokan.jp

Business Innovation Center Osaka

Business Innovation Center Osaka supports Osaka City-based SMEs, offering various kinds of services to help corporate management and start-up businesses, and holds events such as seminars, business meetings and networking event.

Information

1-4-5 Hommachi, Chuo-ku, Osaka, 541-0053
<https://www.sansokan.jp/>



MEBIC



MEBIC

Creative Network Center Osaka MEBIC

MEBIC fosters Osaka-based creators and companies to create networks to underpin the creative industries in Osaka.


Information

F17 Business Innovation Center Osaka, 1-4-5 Hommachi, Chuo-ku, Osaka, 541-0053
<https://www.mebic.com/media/pdf/pamphlet-en.pdf>



English site

B



MYDOME OSAKA


MYDOME OSAKA, a large, accessible urban event hall located in Sakaisuji-Hommachi, the heart of Osaka, offers versatile venues for a variety of events.

Information

2-5 Hommchibashi, Chuo-ku, Osaka, 540-0029
<https://www.mydome.jp/>



C




OSAKA INNOVATION HUB

Osaka Innovation Hub (OIH)

OIH is a place where entrepreneurs and startups come together to create innovations and launch unprecedented services and businesses to the world.

Information

F7, Grand Front Osaka Knowledge Capital Tower C, 3-1 Ofuka-cho, Kita-ku, Osaka, 530-0011
<https://www.innovation-osaka.jp/>



English site

D



MOBIO

Monodzukuri Business Information-center Osaka (MOBIO)

MOBIO is a comprehensive support center for manufacturers, offering business matching, market expansion, and collaborations between corporations and universities. It also houses one of Japan's largest permanent exhibition halls.


Information

Creation Core Higashiosaka Kitakan, 1-4-17 Aramotokita, Higashiosaka, Osaka, 577-0011
<https://www.m-osaka.com/en/>



English site

E




ODP
大阪デザイン振興プラザ

Osaka Design Promotion Plaza (ODP)

ODP provides independent creators with incubation offices and holds seminars and events to support young and experienced creators.

Information

F10 ATC Bldg. ITM, 2-1-10 Nankokita, Suminoe-ku, Osaka, 559-0034
https://www.osaka-design.co.jp/about_en



English site

TEQS
ソフト産業プラザ

Software industry plaza TEQS

A Sakishima-based support facility specializing in tech business. TEQS operates 5G X LAB Osaka, a rare facility run in collaboration with public and private sectors, supporting innovative business development utilizing cutting-edge technologies.

Information

F6 ATC Bldg. ITM, 2-1-10 Nankokita, Suminoe-ku, Osaka, 559-0034
<https://teqs.jp/en/>



English site

F



TECHNOSEEDS IZUO

Technoseeds Izuo

Technoseeds Izuo provides small and medium-sized manufacturers with a complex factory base to help them deal with diverse demand, breaking away from the conventional image of rental factories.

Information

6-2-29 Izuo, Taisho-ku, Osaka, 551-0031
<https://www.obda.or.jp/jigyo/izuo.html>

